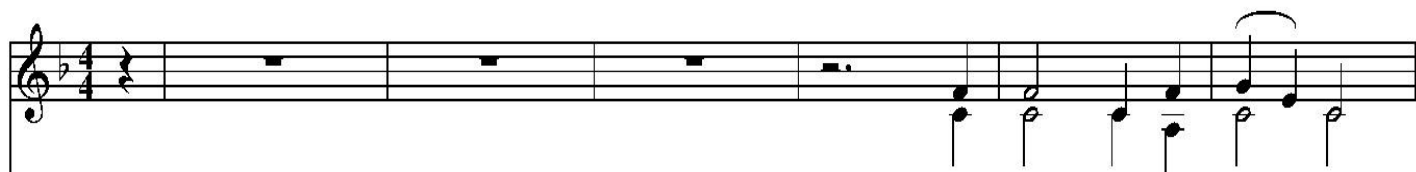


Adeste fideles

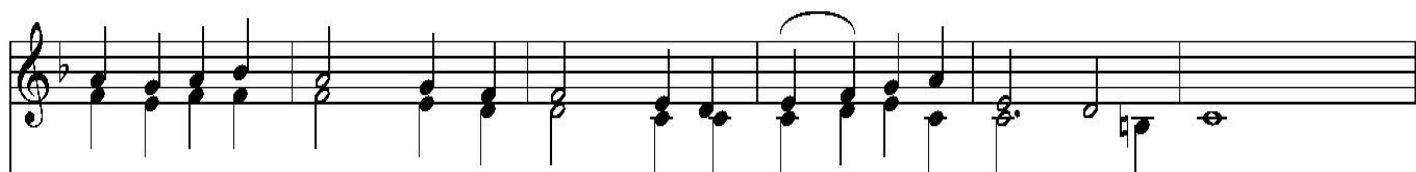
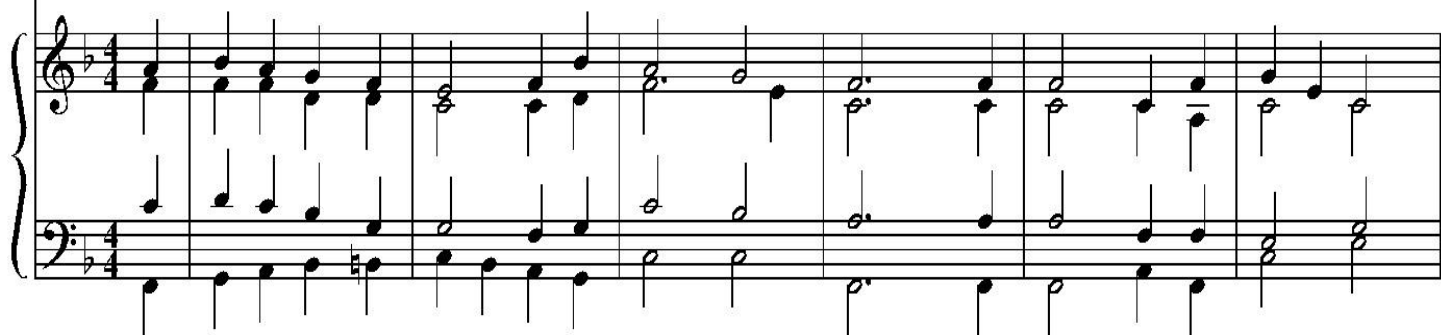
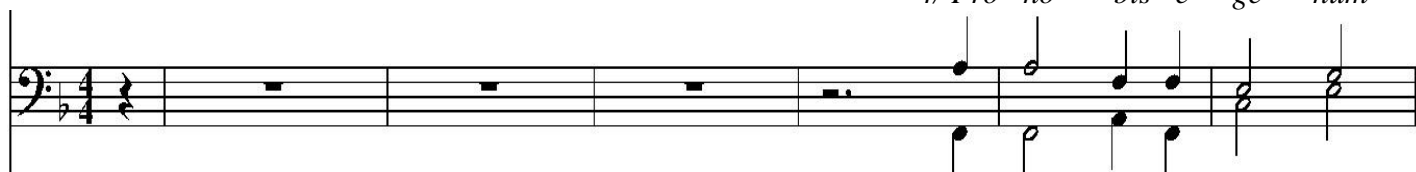
1/2

Hymne de Noël attribuée traditionnellement à St Bonaventure

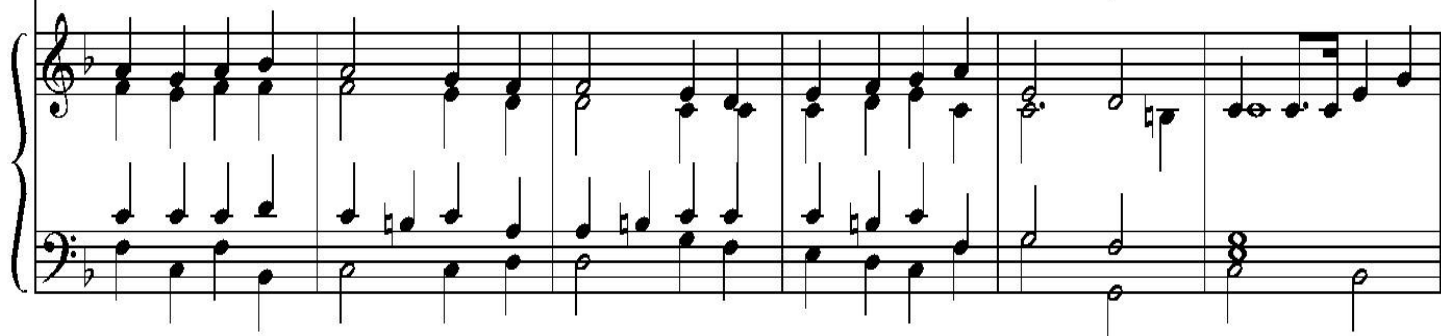
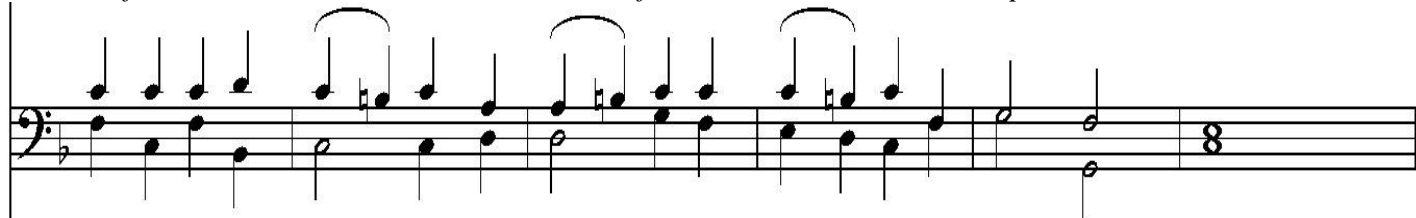
Musique : J.F. Wade - Harmonisation : Simone Olivieri

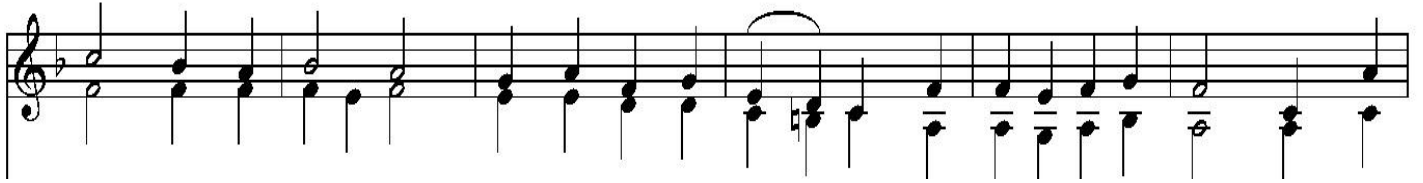


1/ A - de - ste fi - de - les
2/ En gre - ge re - li - cto
3/ Ae - ter - ni Pa - ren - tis
4/ Pro no - bis e - ge - num



1/ læ - ti tri - um - phan - tes, Ve - ni - te, ve - ni - te in Be - thlé - em.
2/ hu - mi - les ad cu - nas, Vo - ca - ti pa - sto - res ap - pro - pe - rant,
3/ splen - do - rem æ - ter - num, Ve - la - tum sub car - ne vi - de - bi - mus,
4/ et fæ - no cu - ban - tem Pi - is fo - ve - a - mus am - ple - xi - bus ;



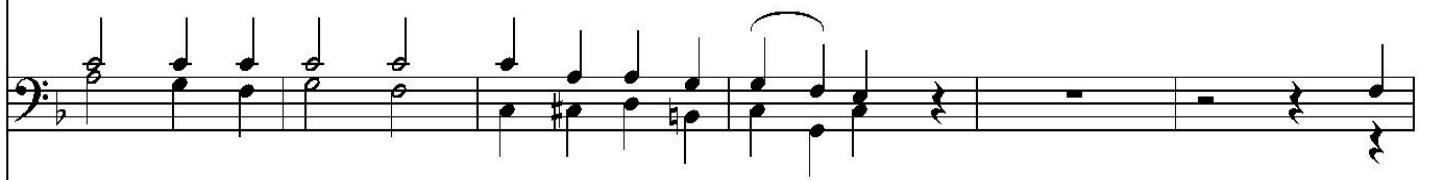


1/ Na - tum vi - de - te Re - gem an - ge - lo - rum.

2/ Et nos o - van - ti gra - du fes - ti - ne - mus. VE - NI - TE A - DO - RE - MUS, VE -

3/ De - um in - fan - tem pan - nis in - vo - lu - tum.

4/ Sic nos a - man - tem quis non re - da - ma - ret ?



NI - TE A - DO - RE - MUS, VE - NI - TE A - DO - RE - MUS DO - MI - NUM.

